

Facility in girl's hostel



[Signature]
DIRECTOR

Chhatrapati Shahu Maharaj Shikshan Sanstha's
Dental College & Hospital
Kanchanwadi, Aurangabad.

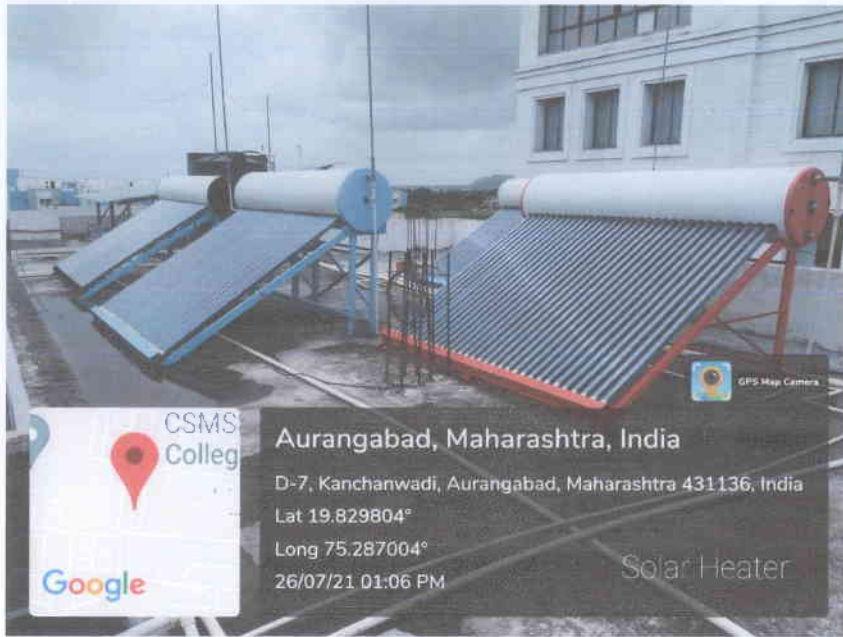


[Signature]

DEAN

Chhatrapati Shahu Maharaj Shikshan Sanstha's
Dental College & Hospital
Kanchanwadi, Aurangabad.

Facility in girl's hostel



Dos and Don'ts in girl's hostel



[Signature]
DIRECTOR

Chhatrapati Shahu Maharaj Shikshan Sanstha
Dental College & Hospital
Kanchanwadi, Aurangabad.



[Signature]
DEAN

Chhatrapati Shahu Maharaj Shikshan Sanstha's
Dental College & Hospital
Kanchanwadi, Aurangabad.

Safety and security



[Signature]

DIRECTOR
 Chhatrapati Shahu Maharaj Shikshan Sanstha's
 Dental College & Hospital
 Kancharwadi, Aurangabad.



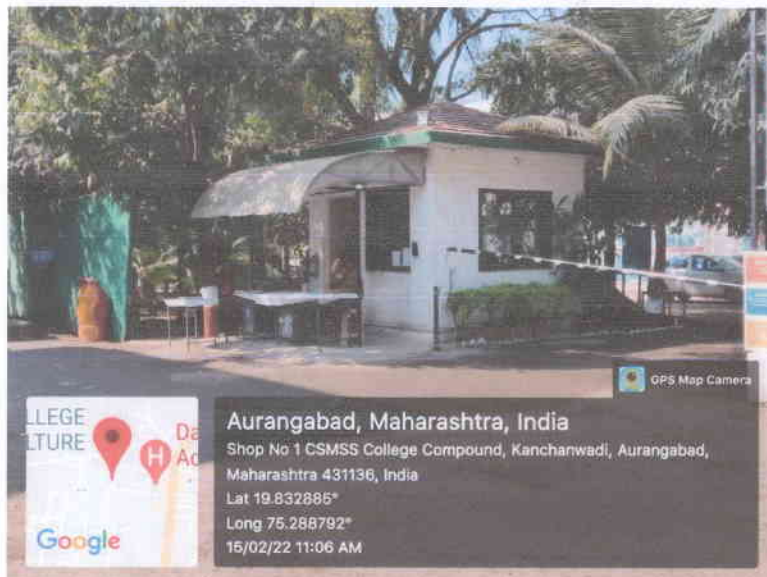
[Signature]

DEAN
 Chhatrapati Shahu Maharaj Shikshan Sanstha's
 Dental College & Hospital
 Kancharwadi, Aurangabad.

Safety and security



Security office at the entrance




DIRECTOR

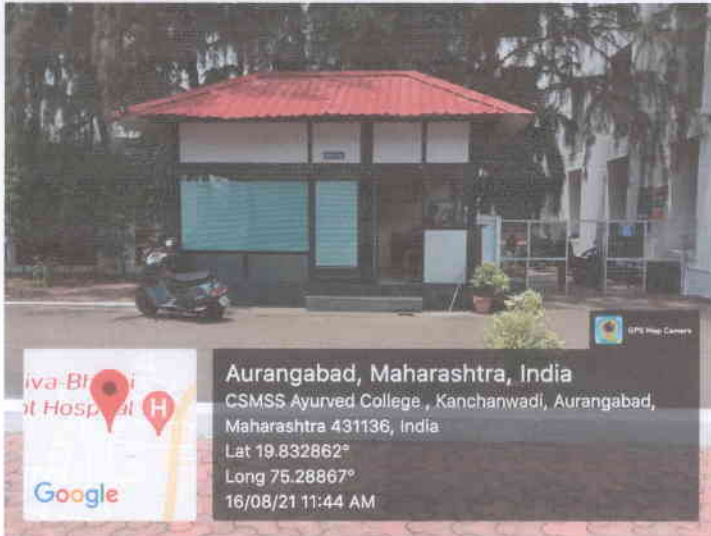
Chhatrapati Shahu Maharaj Shikshan Sanstha's
Dental College & Hospital
Kanchanwadi, Aurangabad.




DEAN

Chhatrapati Shahu Maharaj Shikshan Sanstha's
Dental College & Hospital
Kanchanwadi, Aurangabad.

Security office at girl's hostel entrance



Day Care facility for young children




DIRECTOR

Chhatrapati Shahu Maharaj Shikshan Sanstha's
Dental College & Hospital
Kanchanwadi, Aurangabad.





DEAN


Chhatrapati Shahu Maharaj Shikshan Sanstha's
Dental College & Hospital
Kanchanwadi, Aurangabad.

Separate common rooms for girls and boys




DIRECTOR
Chhatrapati Shahu Maharaj Shikshan Sanstha's
Dental College & Hospital
Kanchanwadi, Aurangabad.




DEAN
Chhatrapati Shahu Maharaj Shikshan Sanstha's
Dental College & Hospital
Kanchanwadi, Aurangabad.